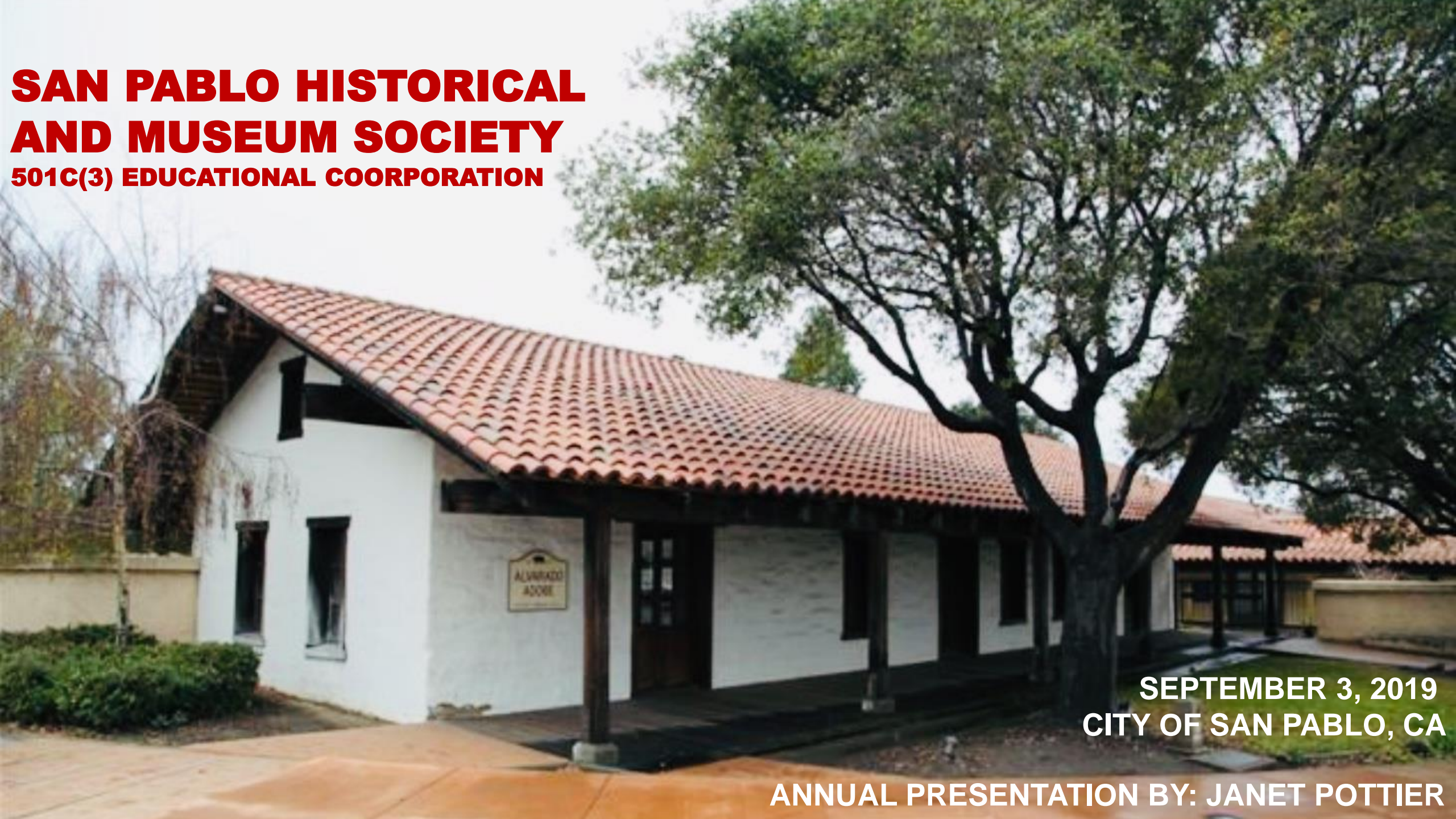


SAN PABLO HISTORICAL AND MUSEUM SOCIETY

501C(3) EDUCATIONAL CORPORATION



**SEPTEMBER 3, 2019
CITY OF SAN PABLO, CA**

ANNUAL PRESENTATION BY: JANET POTTIER

A BRIEF HISTORY OF THE HISTORICAL SOCIETY

- **The San Pablo Historical Society Founded in 1969**
- **The rebuilt Alvarado Adobe dedicated as Museum on November 4, 1978**
- **Formally incorporated on May 6, 1980 as the San Pablo Historical and Museum Society**
- **The Blume House and Bunk House transported to the Civic Center in 1974 formally dedicated as a museum on November 8, 1996.**
- **Current Agreement with the City signed August 8, 2017**



PURPOSE OF THE HISTORICAL SOCIETY

- Operate the Alvarado Adobe and Blume House Museums
- Obtain and maintain objects, documents and photographs connected with the history of the area and City for display at the Museums
- Publicize our operations and raise needed funds
- Publish and update historical publications dealing with the history of the area and the City of San Pablo
- Establish rapport with other historical entities to insure up to date information and operations
- Maintain an ongoing relationship with the City of San Pablo regarding the buildings, our collections and our goals and operations



CURRENT GOALS

- Update exhibits and provide bilingual signage in the museums
- Obtain, train and retain additional members and volunteers
- Continue to offer tours to interested parties
- Develop a program to bring local history and artifacts to the schools
- Maintain our relationship the Bay Area Historical House Museum Association, the Contra Costa County History Alliance, the California Association of Museums, and local museums and Historical Societies in the Area
- Find and implement a computer based accessioning system
- Work with St. Mary's cemetery in Oakland to complete the Alvarado gravesite
- Develop a DVD about life of Governor Alvarado to be used in the schools and for the general public



FUTURE GOALS

- Coordinate and support the City with future development of the proposed Historic Preservation Park at current Civic Center
- Continue to explore new partnerships and technology programs to promote City's historical facilities and museums
- Expand SPHS membership and volunteers



QUESTIONS?