



Transition to Trustee Area Elections

Update to the San Pablo City Council

—
October 15, 2018



Z hvw#F rqud#F rvd#K qllhg#W fkrroG lwlfw##z z lz ffxvg1qhw





WudqvWlrq#r#Wuxvwhh#Duhd#IdhfWlrqv



California Voting Rights Act

- **California Voting Rights Act of 2001**, expands on federal **Voting Rights Act of 1965**.
- A violation of the **CVRA** is established if it is shown that racially polarized voting occurs in elections for members of the governing body.
- **Proof of intent** on the part of the voters or elected officials to discriminate against a protected class is not required.



Z hW#F rQW#F rWd#K qllhg#W fkrroG lwlfw##z z z lz ffxvg1qhw





At-large vs. Trustee-Area Elections

- **At-large elections: Each trustee is elected by all voters within the District.**
- **Trustee-area elections: Each trustee must reside within the designated trustee area boundary, and is elected only by the voters in that trustee area. Also known as “district-based” elections.**





WudqvWlrq#r#Wuxvwhh#Duhd#Idhfwlrqv



Background

- **Established in 1965 (four elementary school districts and one high school district)**
- **Serves 29,000 students in five cities**
- **Governed by five-member Board of Education**



Z hvw#F rqud#F rwd#K qlhg#W fkrro#G lwlfw##z z lz ffxvg lqhw





Background

January 22, 2018

District receives letter alleging its system of at-large elections violates CVRA

March 21, 2018

Lawsuit filed to compel District to move to trustee-area elections

Board adopts Resolution No. 64-1718 indicating its intent to transition to trustee-area elections





Background

April - June

District holds five public hearings on six draft maps

June 27, 2018

Board adopts Resolution No. 101-1718, recommending
County Committee approve map titled “Cities and Schools B”

July 24, 2018

County Committee on School District Organization rejects
District proposal





Current Status

Partial Settlement of Lawsuit – August 2018

- 1. Two-year terms for 2018 seats**
- 2. Trustee-area elections in 2020**
- 3. 2 or 3 seats in 2020 will be two-year terms**





Wudqylwrg#r#Wuxvwhh#Duhd#Idhfwlrqv



What's Next

- 1. Community Outreach**
- 2. Create a map**
- 3. Trustee Area Elections in 2020**



Z hvw#F rqud#F rwd#K qlhg#W fkrre#G lwlfw##z z lz ffxvg lqhw





WudqvWlrq#r#Wuxvwhh#Duhd#IdhfWlrqv



Tentative Timeline

October 22

Map Planning

Riverside ES

October 29

Map Planning

Stege ES

October 30

Map Planning

The Latina Center

November 14

Board Meeting

DeJean MS



Z hW#F rQWd#F rWd#K qllhg#W fkrroG lwlfw##z z lz ffxvg1qhw





Standards and Goals

- 1. Trustee areas must be at least as nearly equal in population (as required by law).**
- 2. The boundaries of the trustee areas shall not be gerrymandered primarily on the basis of race (again as required by law).**
- 3. The boundaries of the trustee areas shall be established so that the trustee areas do not result in a denial or abridgement of the right of any citizen to vote on account of race or color as required by federal law.**





Standards and Goals

4. If possible, the boundaries of the trustee areas shall be compact, meaning that to the extent practicable, minority communities are concentrated in geographical areas in a way that increases their ability to elect candidates of their choice.

5. If possible, the boundaries of the various trustee areas shall contain contiguous territory, with no trustee area having disconnected parts.





Standards and Goals

6. The boundaries of the trustee areas will observe communities of interest, such as the District's elementary and high school attendance areas, rural or urban populations, municipalities, social interests, agricultural, industrial or service industry interests, and the like, insofar as practicable.

7. The boundaries of the trustee areas will specifically take into consideration (though not necessarily be bound by) city boundaries and school attendance areas.





Standards and Goals

8. The location of the residences of the existing Board members generally would not be taken into consideration when creating maps.

9. The maps will have the goal of creating one trustee area with 50% Latino voters, as measured by voter registration, and one trustee area as close to 50% African-American voters as possible, as measured by voter registration.

***Each of the foregoing items, except where noted as a legal requirements, represents goals, rather than absolute requirements.**





Wudqylwrg#r#Wukvwh#Duhd#Idhfwrgv

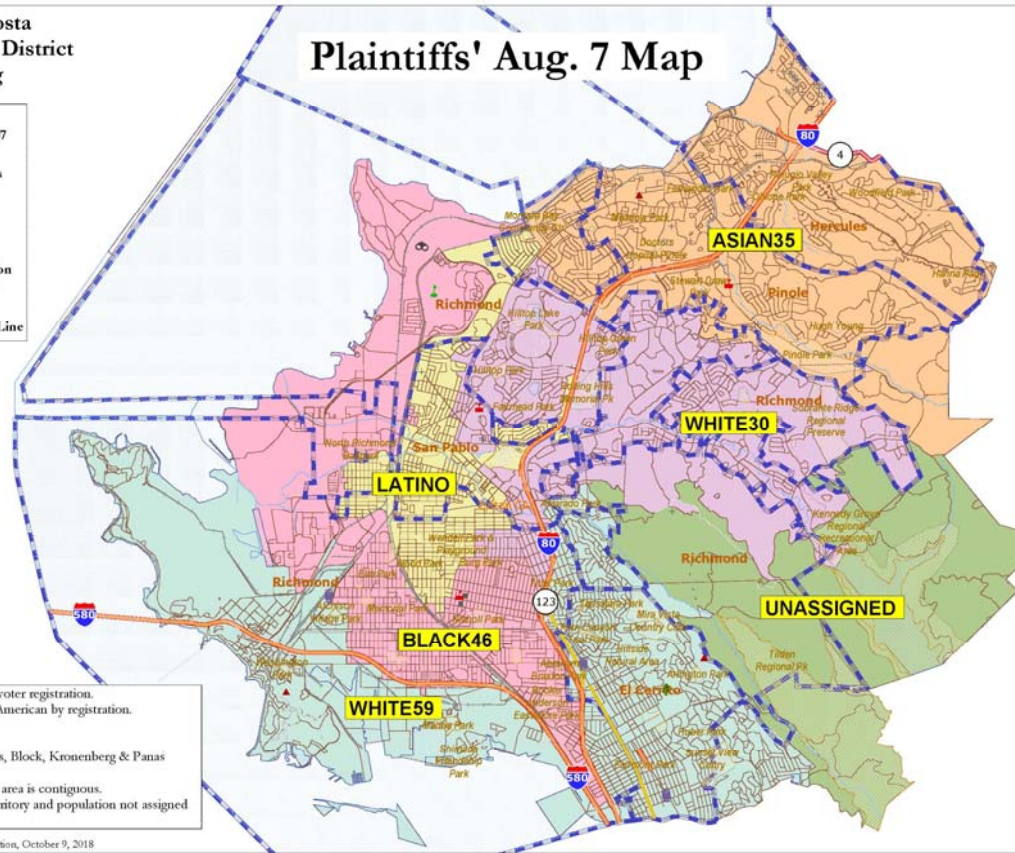
Draft Maps



West Contra Costa
Unified School District
2018 Districting

- Map layers
- Plaintiffs 20180807
 - Census Block
 - Cities and Towns
 - Railroad
 - River
 - Streets
 - Water Area
 - Indian Reservation
 - Landmark Point
 - Landmark Area
 - Pipeline/Power Line

Plaintiffs' Aug. 7 Map



"Latino" is 52% Latino by voter registration.
"Black46" is 52% African-American by registration.

"Latino": Trustee Phillips
"White59": Trustees Cuevas, Block, Kronenberg & Panas

Only the "Asian35" trustee area is contiguous.
"Unassigned" is District territory and population not assigned to any trustee area.

National Demographics Corporation, October 9, 2018

Z hvw#F rqud#F rwd#K qlhg#W fkrro#G lwlfw##z z z lz ffxvg1qhw





Wudqv lwrq#r#Wuxvwh#Duhd#Idhfwlrqv



Draft Maps

West Contra Costa Unified School District 2018 Districting

Area 1 is Hercules & Pinole
Areas 2 is the Country Club, Hilltop, San Pablo east of I-80 and rural Richmond
Area 3 is El Cerrito, the Marina and parts of Wilson and King Elem. in Richmond
Area 4 is San Pablo & Richmond
Area 5 is South Richmond, Iron Triangle and North Richmond

Map layers

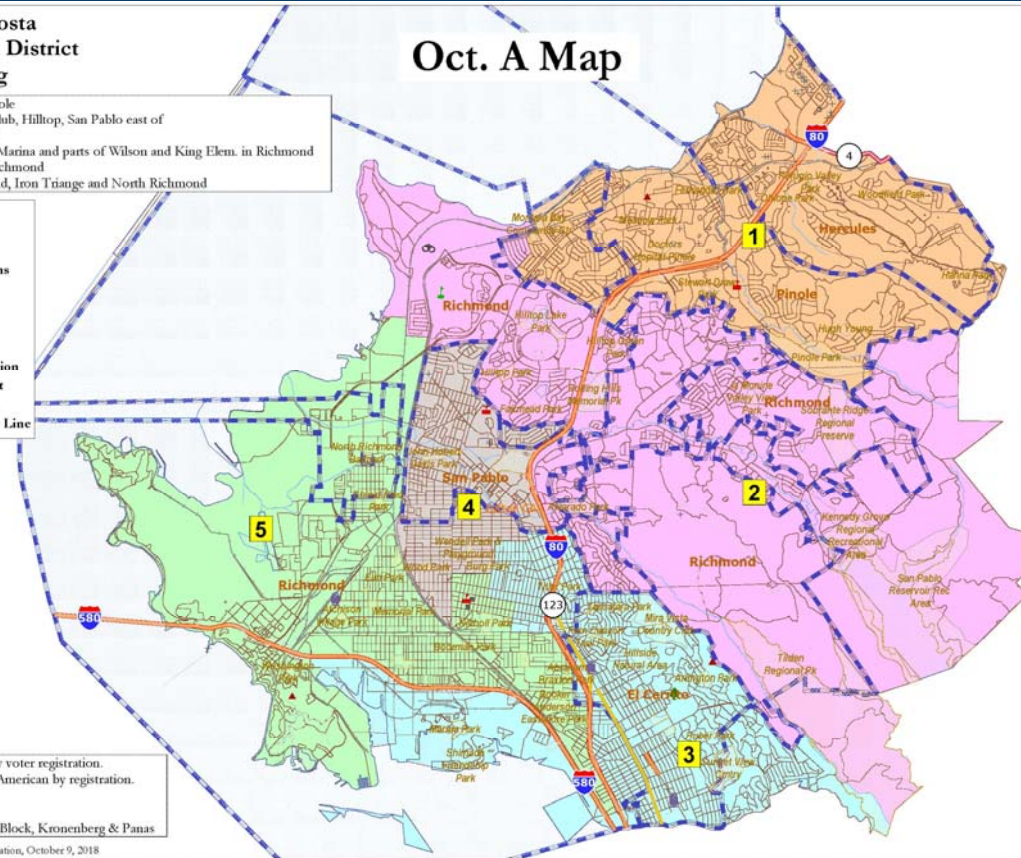
- Oct A
- Census Block
- Cities and Towns
- Railroad
- River
- Streets
- Water Area
- Indian Reservation
- Landmark Point
- Landmark Area
- Pipeline/Power Line

Area 4 is 50.1% Latino by voter registration.
Area 5 is 50.7% African-American by registration.

Area 5: Trustee Phillips
Area 3: Trustees Cuevas, Block, Kronenberg & Panas

National Demographics Corporation, October 9, 2018

Oct. A Map



Z hvw#F rqwd#F rwd#K qlhg#W fkrro#G lwlfw#z z z lz ffxvg lqhw





WudqvWlrq#r#Wuxvwhh#Duhd#Idhfwlrqv



Draft Maps

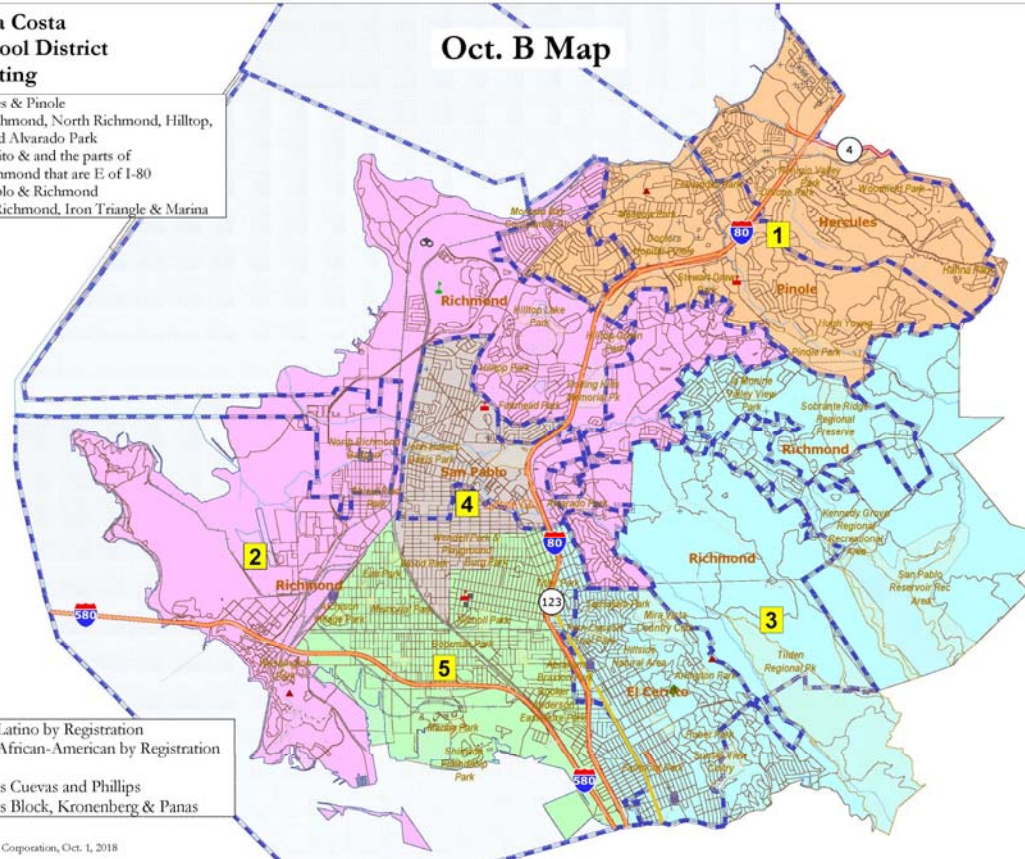
West Contra Costa Unified School District 2018 Districting

Area 1 is Hercules & Pinole
Areas 2 is Pt. Richmond, North Richmond, Hilltop,
Country Club and Alvarado Park
Area 3 is El Cerrito & and the parts of
San Pablo & Richmond that are E of I-80
Area 4 is San Pablo & Richmond
Area 5 is South Richmond, Iron Triangle & Marina

Oct. B Map

Area 4: 50.8% Latino by Registration
Area 5: 50.3% African-American by Registration
Area 5: Trustees Cuevas and Phillips
Area 3: Trustees Block, Kronenberg & Panas

National Demographics Corporation, Oct. 1, 2018



Z hvw#F rqwd#F rwd#K qlhg#W fkrro#G lwlfw##z z z lz ffxvglqhw





Wudqylwrg#r#Wuxvwhh#Duhd#Idhfwlrqv



Resources

www.wccusd.net/trusteemaps

Interactive maps

FAQ

Documents

Proposed maps



Z hvw#Frqwd#Frwd#Kqlhg#Wfkrro#G lwlfw##z z lz ffxvg lqhw





Wudqylwrg#r#Wuxvhh#Duhd#Idhfwlrqv

Outreach Plan



Questions



Z hvw#F rqud#F rwd#K qlhg#W fkrre#G lwlfw##z z lz ffxvg lqhw

