



City of San Pablo

**MCE**

A local, not-for-profit  
electricity provider

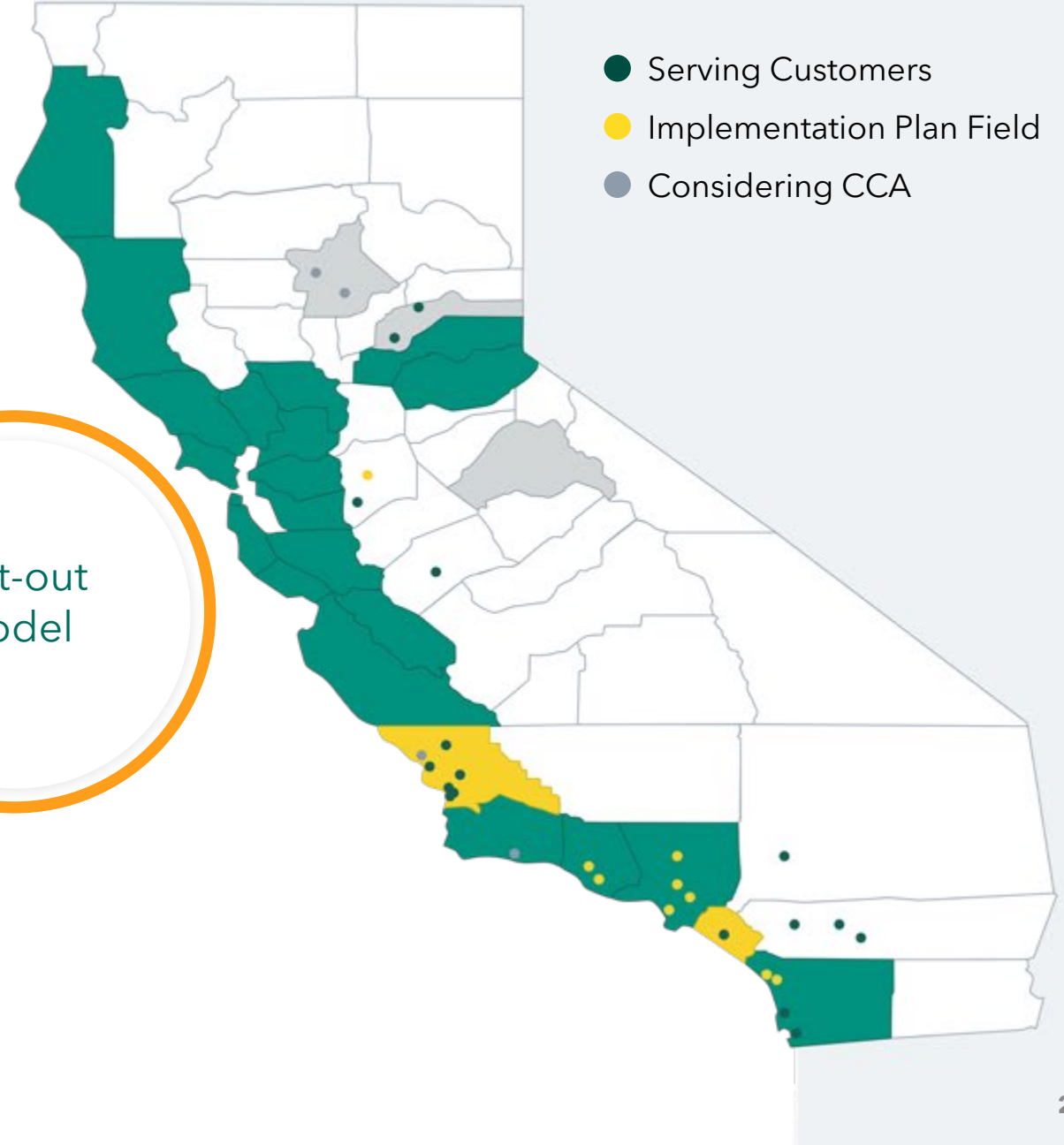
April 6, 2026

# Community Choice in California

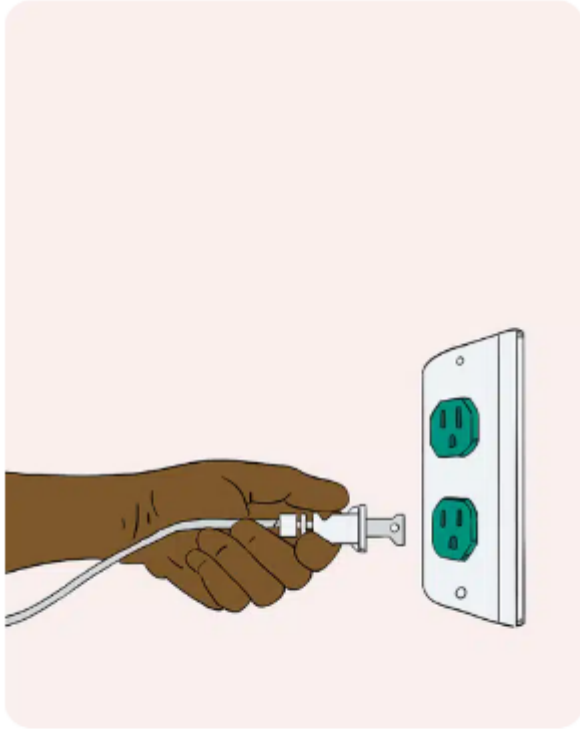
Enabling  
Legislation  
AB 117, 2002

Over 14 million  
customers & 200  
communities

Opt-out  
model

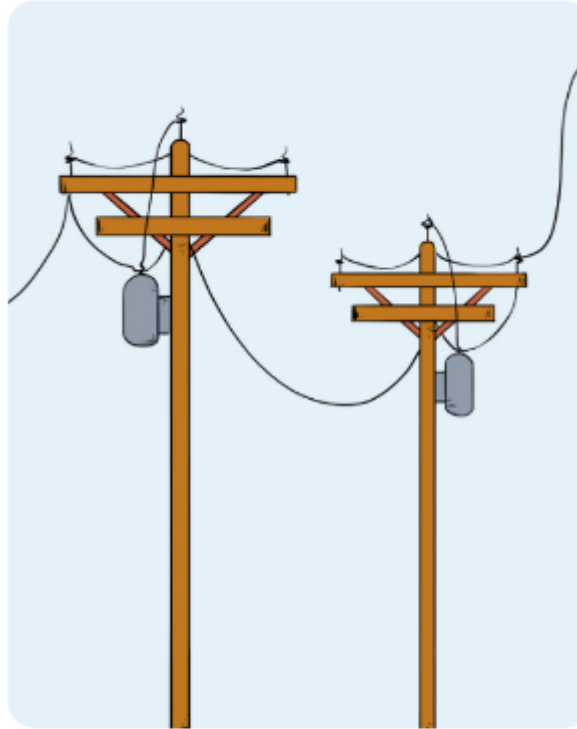


# How MCE Works



## You

Benefit from cleaner air, stable rates, choice, and local control



## PG&E

Delivers energy, maintains lines, and sends bills



## MCE

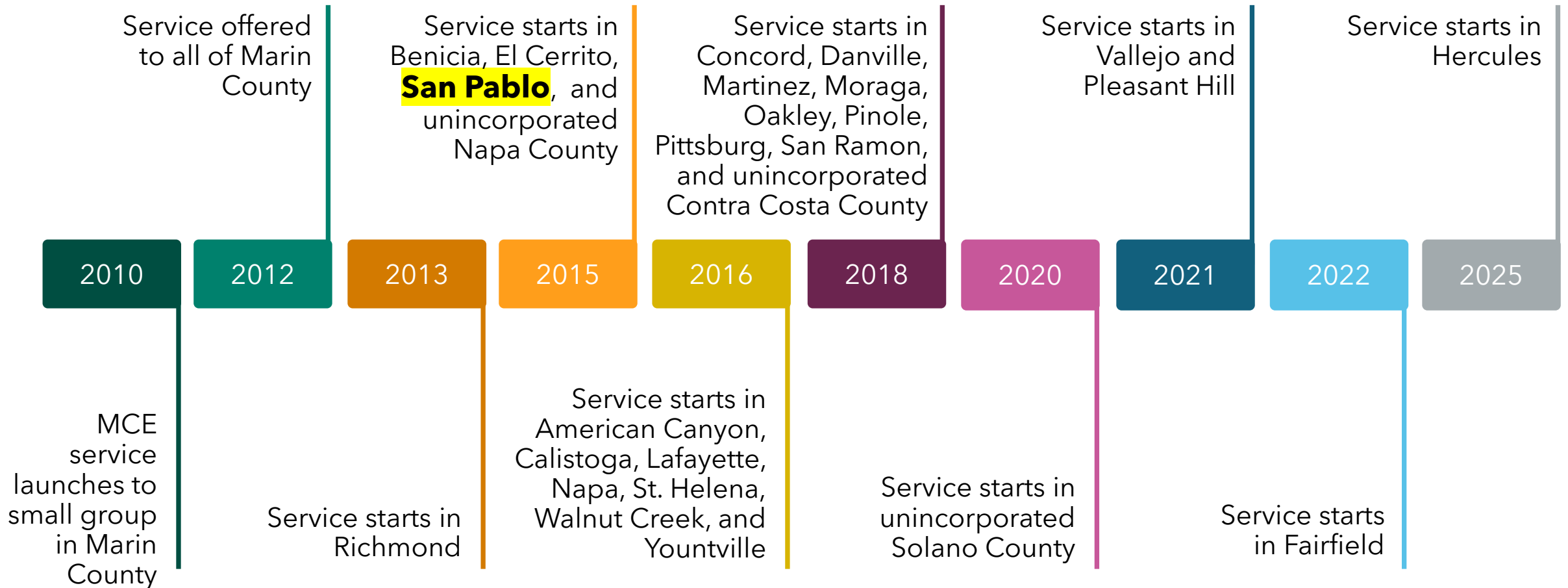
Buys and builds clean and renewable energy for you

# Not-for-Profit Public Agency

**34 Board Members.  
Elected officials.  
No tax dollars.**



# MCE's Growth





# Your Energy Choices

# Choice is Power

MCE  
Deep Green  
**100%**  
RENEWABLE


## Default Service

MCE  
Light Green  
**60%**  
RENEWABLE

PG&E  
**23%**  
RENEWABLE

# Understanding MCE Rates

- **MCE sets rates for electricity generation only.**
- MCE typically sets its rates once a year.
- MCE's rates are released to the public with a 30-day review and comment period. **All rate changes are reviewed publicly by MCE's Board of Directors and approved in a voting meeting.**

A photograph of a woman and a man sitting at a table, smiling and looking at a laptop. The woman is on the left, wearing a light green sweater. The man is on the right, wearing a light-colored polo shirt. They appear to be in a meeting or collaborative work environment.

MCE **does not** set rates for electric delivery or natural gas.

## Discount Programs

- **CARE, FERA, and Medical Baseline Allowance** are provided in full.
- **Discount programs remain the same with MCE service.** Includes: California Arrearage Payment Program, Percentage of Income Payment Plan, and PG&E employee discounts.
- **MCE Cares Credit** provides **\$20/mo credit** to households and **\$25/mo credit** to small businesses



**no need  
to reapply**

# Residential Cost Comparison

	MCE Light Green <b>60%</b> RENEWABLE	MCE Deep Green <b>100%</b> RENEWABLE	PG&E <b>23%</b> RENEWABLE
<b>Electric Generation</b>	<b>\$51.62</b>	<b>\$59.81</b>	<b>\$53.94</b>
PG&E Electric Delivery	\$129.35	\$129.35	\$129.35
Additional PG&E Fees	\$16.29	\$16.29	\$-4.02
<b>Average Total Monthly Cost</b>	<b>\$197.26</b>	<b>\$205.45</b>	<b>\$179.26</b>



# MCE and The City San Pablo

# San Pablo At A Glance

## Customer Enrollment

MCE Participation Rate	88%
Deep Green	5%
Solar	5%
CARE Discount	37%
Medical Baseline	2%

## Community Benefits<sup>1</sup>

EV Rebates Distributed <sup>2</sup>	\$229,000
EV Ports Installed <sup>3</sup>	21
Energy Charging Rebates Distributed	\$66,500
Energy Efficiency Rebates Distributed	\$297,873

- San Pablo city staff are participating in a new Contra Costa staff working group led by MCE. This quarterly group brings together a collation of sustainability staff across MCE member communities in Contra Costa County.
- Proud sponsors of Fiestas Patrias, Small Business of the Year Mixer, and Contra Costa College Earth Day.

<sup>1</sup> Cumulative statistics since joining MCE

<sup>2</sup> Funds distributed directly to customers

<sup>3</sup> Ports installed at public parking lots for small businesses, schools, multifamily housing, and public agencies



**MCE staff at Contra Costa College Earth Day in San Pablo**

# Community Engagement

- **San Pablo EDC:** MCE is investing \$12,500 in partnership with San Pablo EDC to support local small businesses.
- **Clean Transportation Focus Group:** 24 residents engaged through a bilingual focus group with the City of San Pablo to expand access to clean transportation.



**\$1,884 annual  
bill savings per  
business**

8 Community  
Events

**349**  
Businesses  
Reached

# Customer Programs



## **Workplace & Multifamily Charging**

\$4,500 rebate for workplace and multifamily properties



## **Energy Efficiency & Demand Response**

Programs to reduce energy use during peak hours



## **Strategic Energy Management (SEM)**

Behavioral changes that save you money

# The Power of MCE

**500K**

metric tons of  
GHGs eliminated  
since 2010

**95%**

carbon-free  
since 2022

**\$4.5B**

committed to  
building new CA  
renewable projects

**3.3M**

of labor hours  
supported

60% renewable  
since 2017,

**100%**

renewable option

**\$400M**

reinvested in MCE  
communities since  
2010

**48MW**

of new renewable  
projects built in our  
service area

**7,100**

jobs created

# Thank you!



[mceCleanEnergy.org](http://mceCleanEnergy.org)  
[info@mceCleanEnergy.org](mailto:info@mceCleanEnergy.org)