



City of San Pablo

MCE

A local, not-for-profit
electricity provider

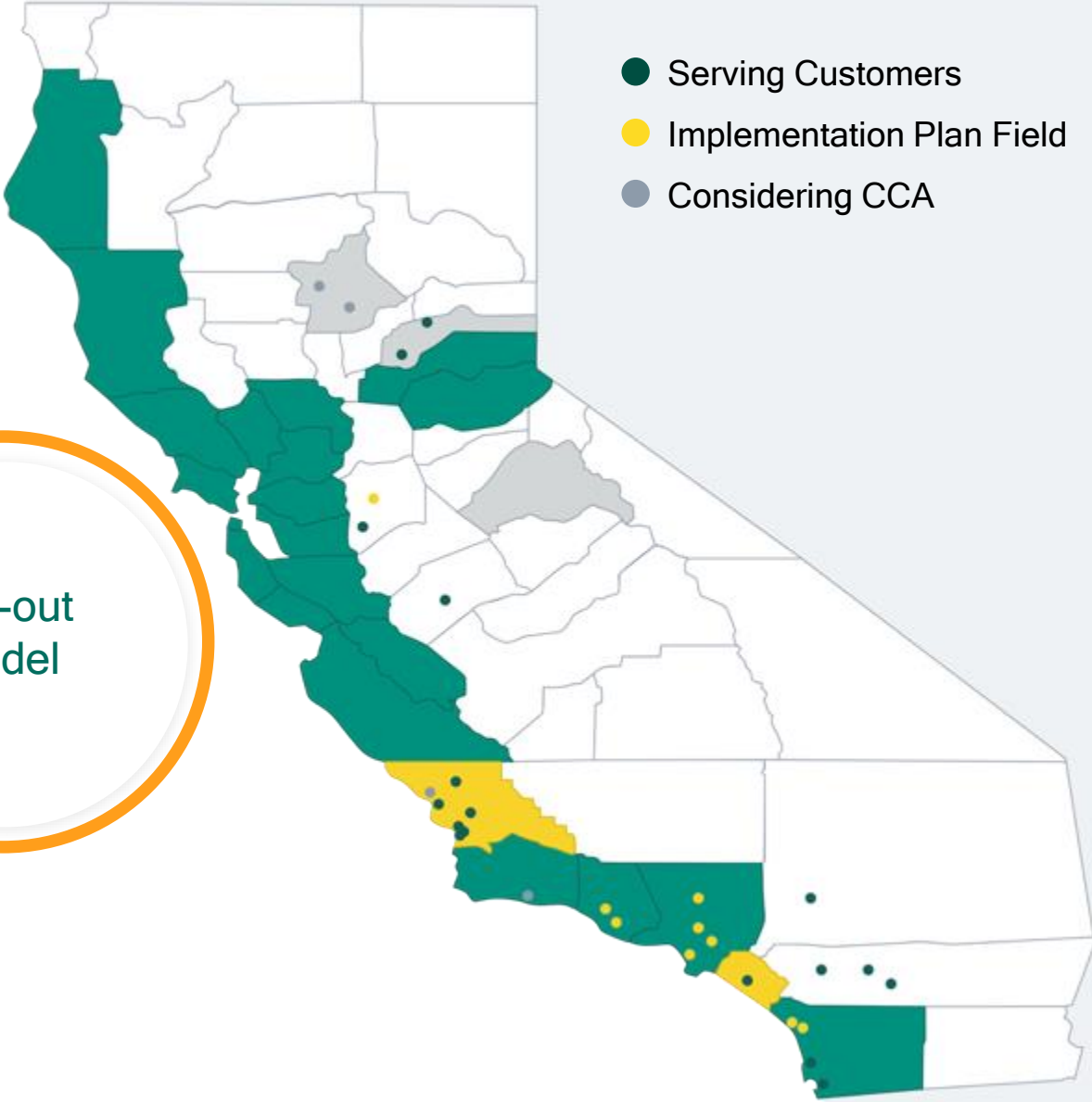
April 6, 2026

Community Choice in California

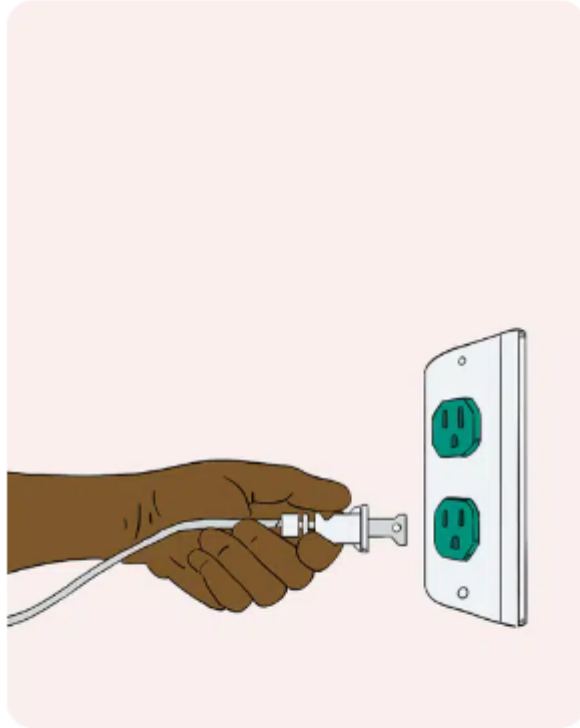
Enabling Legislation
AB 117, 2002

Over 14 million customers & 200 communities

Opt-out model

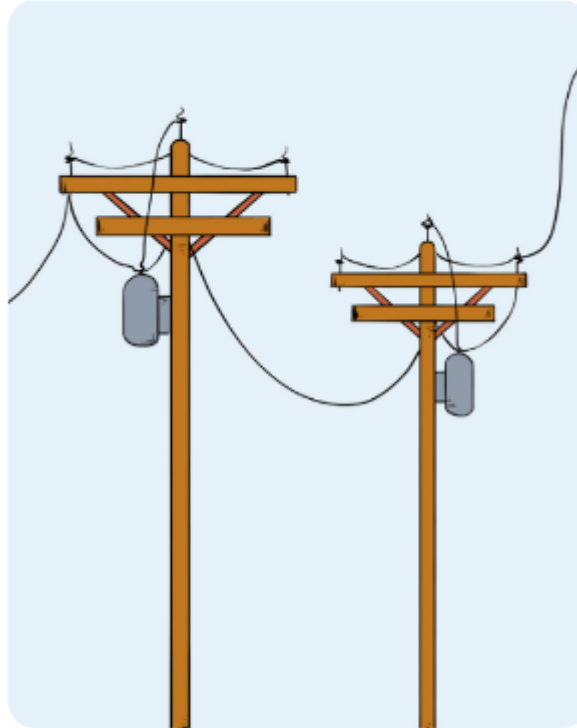


How MCE Works



You

Benefit from cleaner air, stable rates, choice, and local control



PG&E

Delivers energy, maintains lines, and sends bills



MCE

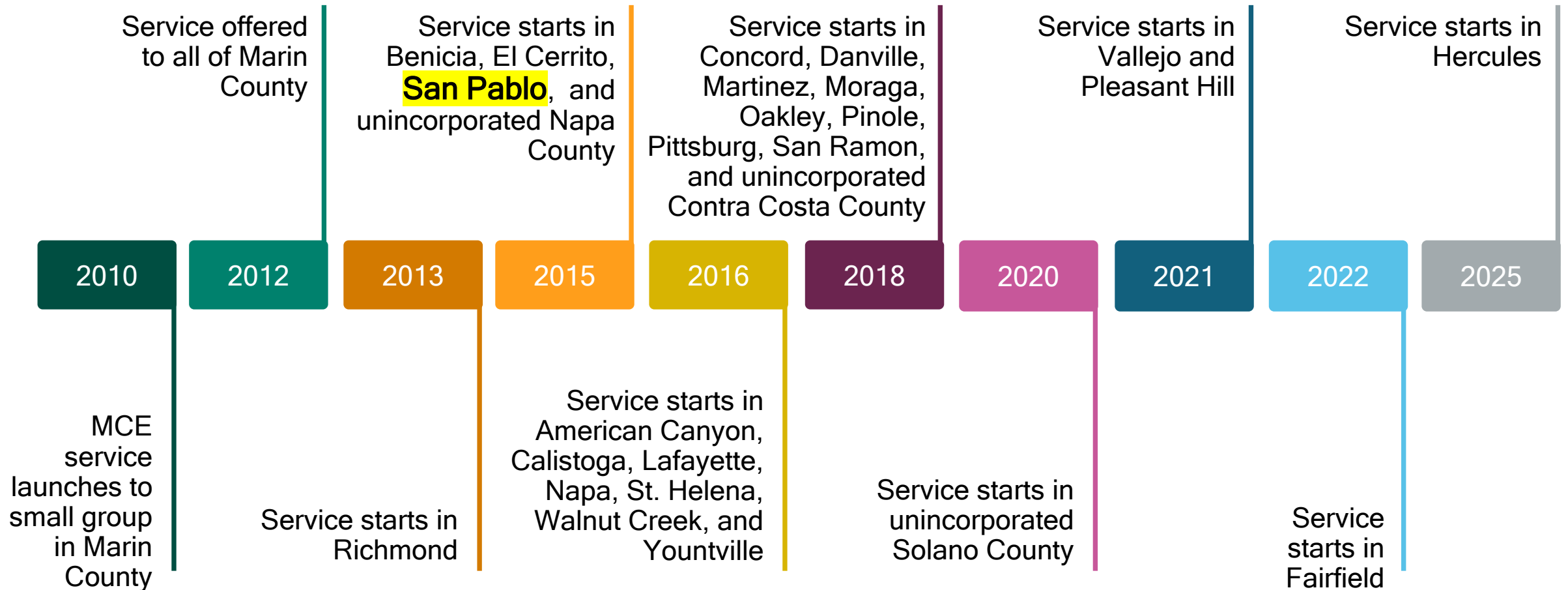
Buys and builds clean and renewable energy for you

Not-for-Profit Public Agency

34 Board Members.
Elected officials.
No tax dollars.



MCE's Growth





Your Energy Choices

Choice is Power

MCE
Deep Green
100%
RENEWABLE


Default Service

MCE
Light Green
60%
RENEWABLE

PG&E
23%
RENEWABLE

Understanding MCE Rates

- MCE sets rates for electricity generation only.
- MCE typically sets its rates once a year.
- MCE's rates are released to the public with a 30-day review and comment period. All rate changes are reviewed publicly by MCE's Board of Directors and approved in a voting meeting.

A photograph of a woman and a man sitting at a desk, smiling and looking at a laptop. The woman is on the left, and the man is on the right. They appear to be in a professional or collaborative setting.

MCE does not set rates for electric delivery or natural gas.

Discount Programs

- CARE, FERA, and Medical Baseline Allowance are provided in full.
- Discount programs remain the same with MCE service. Includes: California Arrearage Payment Program, Percentage of Income Payment Plan, and PG&E employee discounts.
- MCE Cares Credit provides \$20/mo credit to households and \$25/mo credit to small businesses



no need to
reapply

Residential Cost Comparison

	MCE Light Green 60% RENEWABLE	MCE Deep Green 100% RENEWABLE	PG&E 23% RENEWABLE
Electric Generation	\$51.62	\$59.81	\$53.94
PG&E Electric Delivery	\$129.35	\$129.35	\$129.35
Additional PG&E Fees	\$16.29	\$16.29	\$-4.02
Average Total Monthly Cost	\$197.26	\$205.45	\$179.26



MCE and The City San Pablo

San Pablo At A Glance

Customer Enrollment

MCE Participation Rate	88%
Deep Green	5%
Solar	5%
CARE Discount	37%
Medical Baseline	2%

Community Benefits¹

EV Rebates Distributed ²	\$229,000
EV Ports Installed ³	21
Energy Charging Rebates Distributed	\$66,500
Energy Efficiency Rebates Distributed	\$297, 873

- San Pablo city staff are participating in a new Contra Costa staff working group led by MCE. This quarterly group brings together a collation of sustainability staff across MCE member communities in Contra Costa County.
- Proud sponsors of Fiestas Patrias, Small Business of the Year Mixer, and Contra Costa College Earth Day.

¹ Cumulative statistics since joining MCE

² Funds distributed directly to customers

³ Ports installed at public parking lots for small businesses, schools, multifamily housing, and public agencies



MCE staff at Contra Costa College Earth Day in San Pablo

Community Engagement

- **San Pablo EDC:** MCE is investing \$12,500 in partnership with San Pablo EDC to support local small businesses.
- **Clean Transportation Focus Group:** 24 residents engaged through a bilingual focus group with the City of San Pablo to expand access to clean transportation.



**\$1,884 annual
bill savings per
business**

**8 Community
Events**

**349
Businesses
Reached**

Customer Programs



Workplace & Multifamily Charging

\$4,500 rebate for workplace and multifamily properties



Energy Efficiency & Demand Response

Programs to reduce energy use during peak hours



Strategic Energy Management (SEM)

Behavioral changes that save you money

The Power of MCE

500K

metric tons of GHGs
eliminated since
2010

95%

carbon-free
since 2022

\$4.5B

committed to building
new CA renewable
projects

3.3M

of labor hours
supported

60% renewable
since 2017,

100%

renewable option

\$400M

reinvested in MCE
communities since
2010

48MW

of new renewable
projects built in our
service area

7,100

jobs created

Thank you!



mceCleanEnergy.org
info@mceCleanEnergy.org